



Seneca Ridge
Springfield Township, PA



Land for Sale or Lease

**6956 Susquehanna Trail
@ Cheyenne Drive
York, PA**

- 1.22 Acres for Sale or Lease
- Close proximity to I-83 / Dallastown Intermediate School
- Over 190' frontage on Susquehanna Trail
- 5 EDU's included in Sale Price

LEASING CONTACT



RHINO REALTY GROUP, INC.
Kevin Potter / Sales & Leasing Specialist
Office: (717) 650-6729
Mobile: (717) 476-4425
kevin@rhinorealtygroup.com

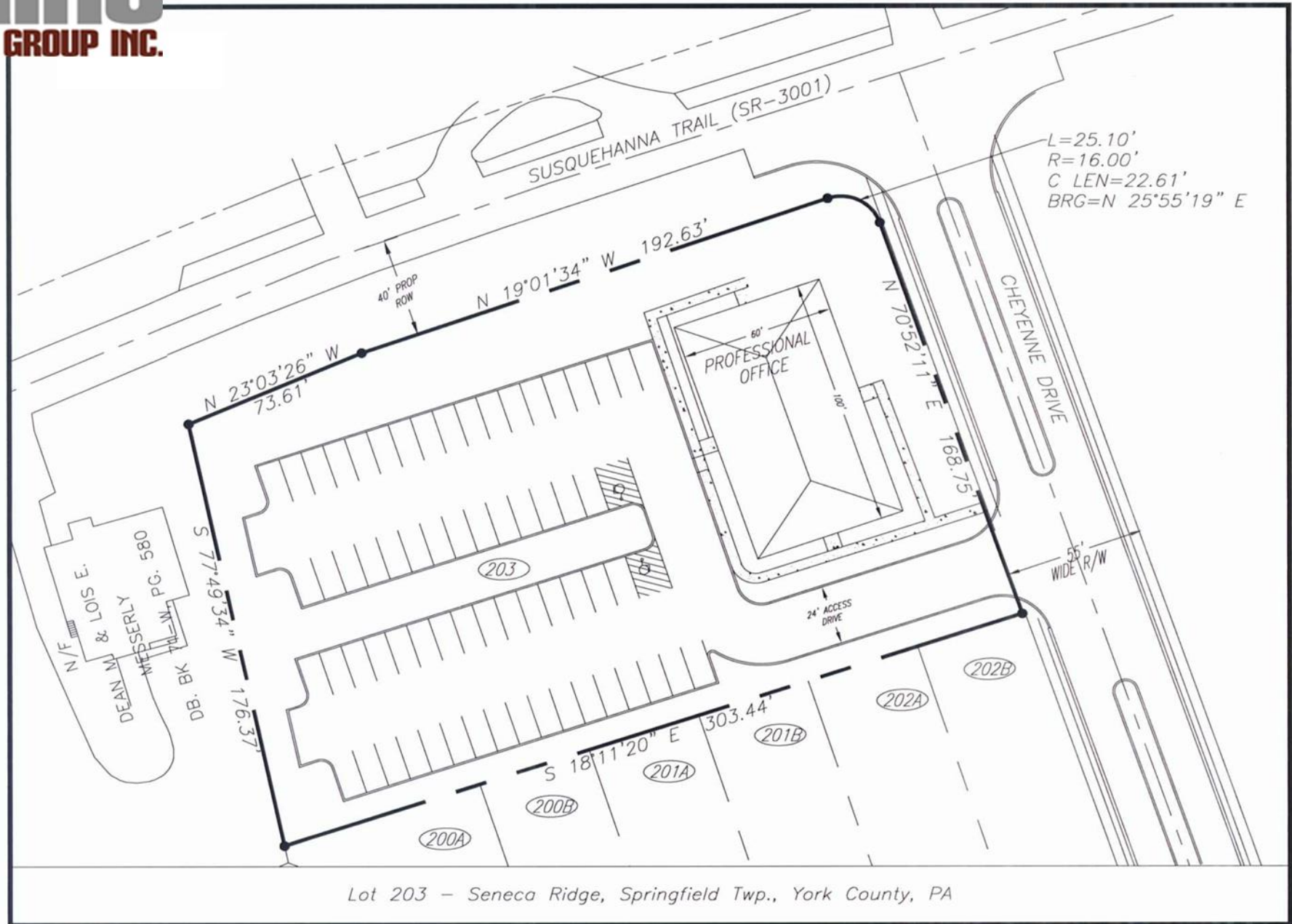
Demographics	3 Mile	5 Miles	10 Miles
Population	11,246	42,168	246,861
Average HH Income	\$89,970	\$82,296	\$70,491
Total Households	4,410	17,282	96,880

RHINO REALTY GROUP INC. ▪ 2645A Carnegie Road ▪ York, PA 17402 ▪ P: 717-650-6729 ▪ rhinorealtygroup.com



Information shown is purported to be from reliable sources. No representation is made to the accuracy thereof, and is submitted subject to errors, omissions, change in price, prior sale, withdrawal without notice, or other conditions





Lot 203 - Seneca Ridge, Springfield Twp., York County, PA