



# Office Space for Lease

2930 Carol Road, York, PA

## AVAILABLE for LEASE



- 986 – 2,660 SF Office Space for Lease (2 Floors)
- Spaces can be combined totaling 3,646 SF
- Great location off the busy intersection of East Prospect Road (Mt. Rose Avenue) and Edgewood Road (Route 24)
- Approximately 1 Mile from I-83 / Mt. Rose Avenue Exit
- On Site Parking

### LISTING CONTACT



#### RHINO REALTY GROUP, INC.

Kevin Potter / Sales & Leasing Specialist  
 Office: (717) 650-6729  
 Mobile: (717) 476-4425  
[kevin@rhinorealtygroup.com](mailto:kevin@rhinorealtygroup.com)

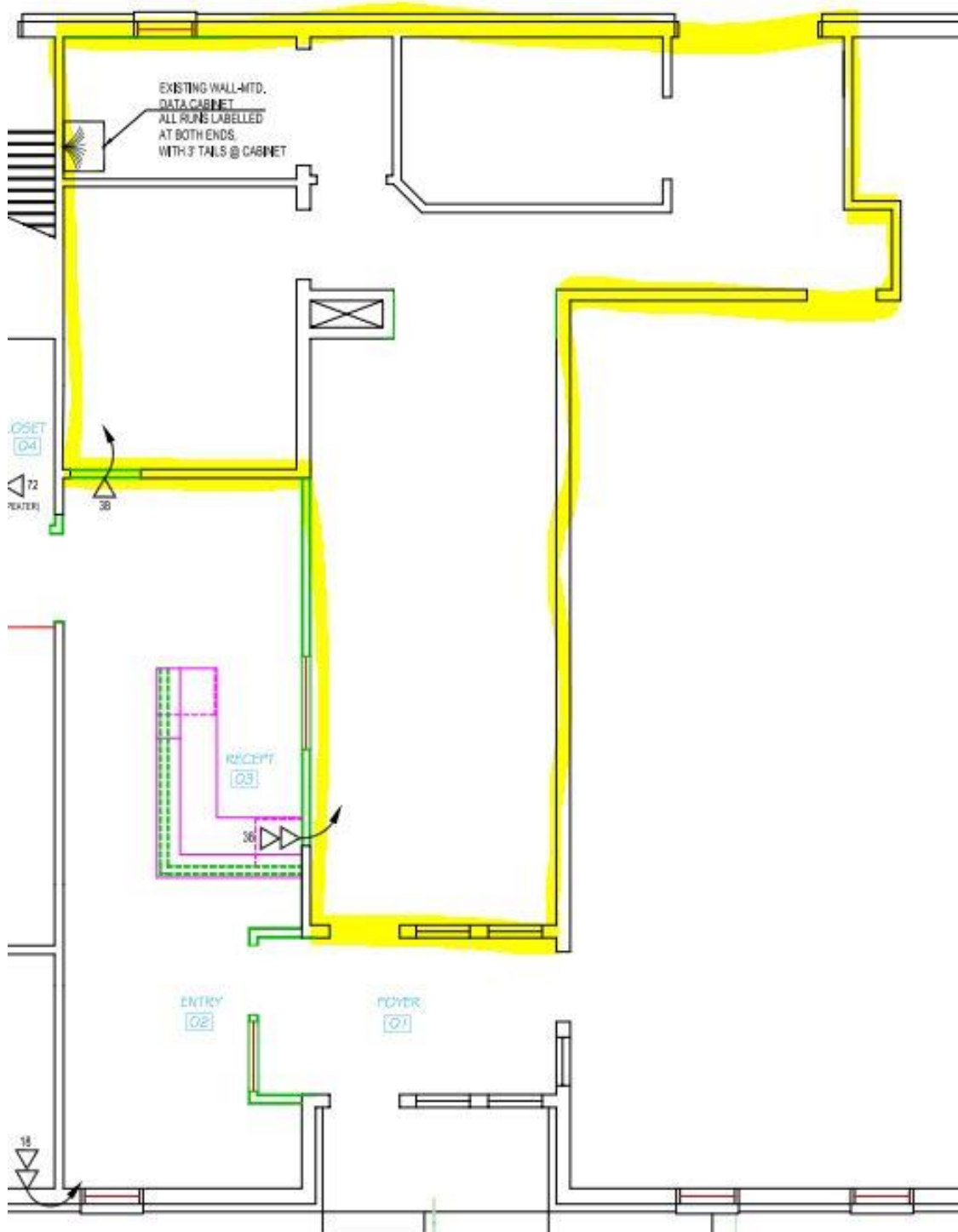


RHINO REALTY GROUP INC. ▪ 2645A Carnegie Road ▪ York, PA 17402 ▪ P: 717-650-6729 ▪ [rhinorealtygroup.com](http://rhinorealtygroup.com)

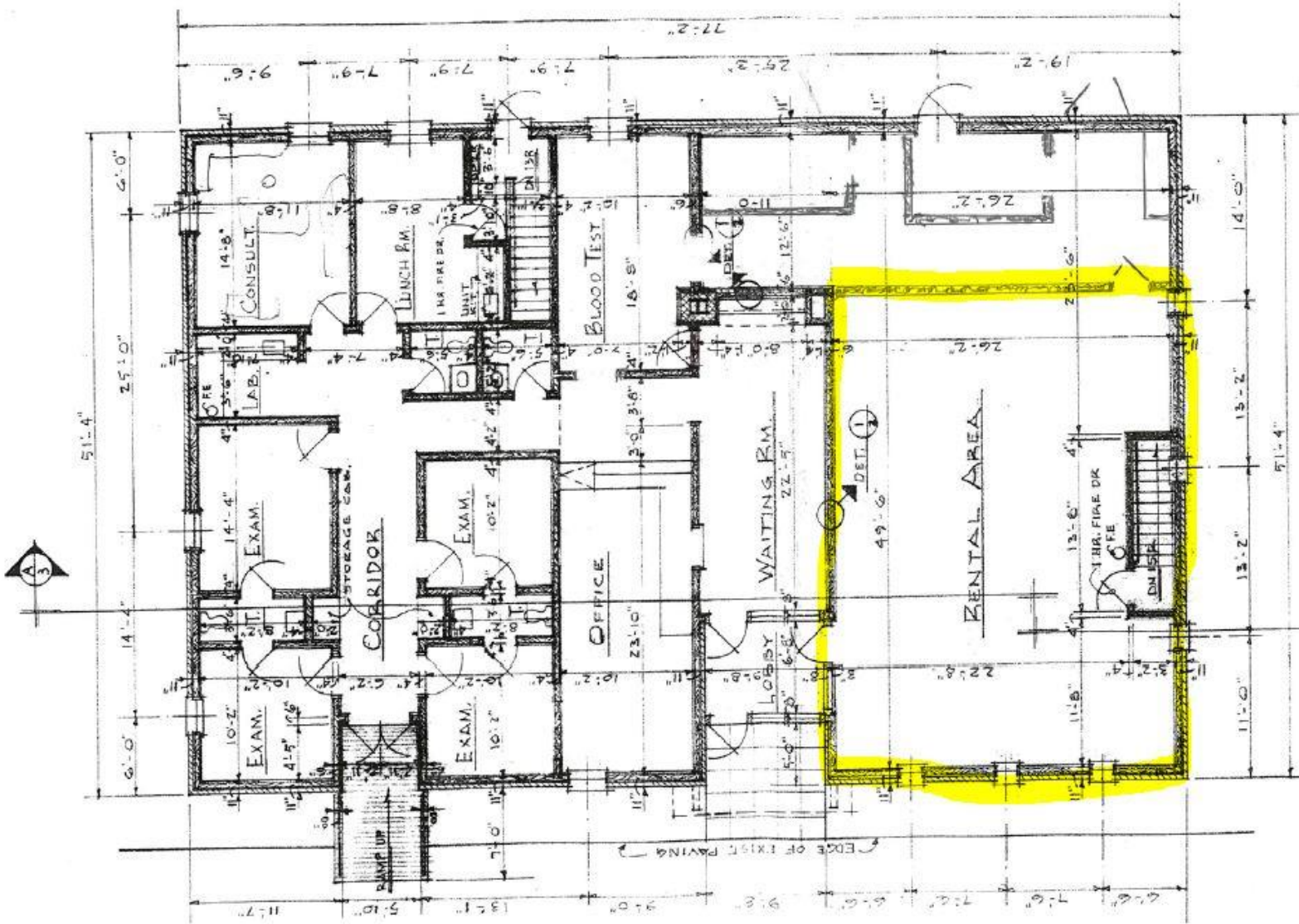


*Information shown is purported to be from reliable sources. No representation is made to the accuracy thereof, and is submitted subject to errors, omissions, change in price, prior sale, withdrawal without notice, or other conditions*





RHINO REALTY GROUP INC. ▪ 2645A Carnegie Road ▪ York, PA 17402 ▪ P: 717-650-6729 ▪ rhinorealtygroup.com



RHINO REALTY GROUP INC. ▪ 2645A Carnegie Road ▪ York, PA 17402 ▪ P: 717-650-6729 ▪ rhinorealtygroup.com